

## Box Properties

--Description--

Name:

Type: Closed Box

Shape: Prism, square

--Box Parameters--

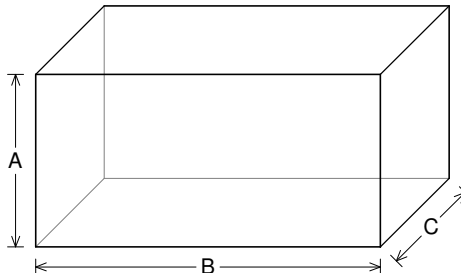
Vb = 4.967 cu.ft

V(total) = 5.564 cu.ft

Qtc = 1.611

F3 = 42.74 Hz

Fill = none



--External Dimensions--

A = 20 in

B = 40 in

C = 15 in

--Internal Dimensions--

A = 18.5 in

B = 38.5 in

C = 13.5 in

--Wall Thickness--

Front = 0.75 in

Side = 0.75 in

## Driver Properties

--Description--

Name: SXX 18 D4

Type: Standard one-way driver

Company: RE Audio (2015)

--Configuration--

**No. of Drivers = 2**

Mounting = Standard

Wiring = Parallel

Drivers sum coherently = Yes

Dual voice coils = parallel

--Driver Parameters--

Fs = 45.06 Hz

Qms = 10.91

Vas = 1.768 cu.ft [3.537]

Xmax = 1.1 in

Sd = 180.5 sq.in [360.9]

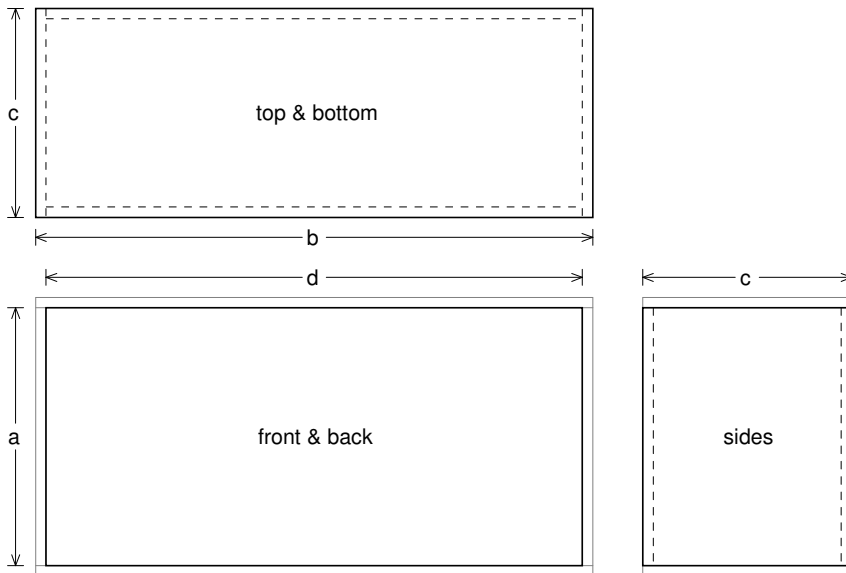
Qes = 1.601

Re = 1.987 ohms [0.993]

Le = 2.274 mH [1.137]

Z = 2.384 ohms [1.192]

Pe = 1200 watts [2400]



### Box Parts

Box Shape: Square Prism

- 1 Top, 1 Bottom: depth (c) = 15 in  
width (b) = 40, thickness = 0.75 in
- 1 Front, 1 Back: height (a) = 18.5 in  
width (d) = 38.5, thickness = 0.75 in
- 2 Sides: height (a) = 18.5 in  
depth (c) = 15, thickness = 0.75 in

--Driver Mounting--

Mounting: Front

Aim: All drivers face same direction



### Wiring Diagram

